

**INNOVATION**  
**WITHOUT LIMITATION**

# Making Users More Productive with Enterprise Search

Lopa Subramanian

# Agenda



- What is Enterprise Search?
- Demonstration
- Architecture
- Installation & Settings
- Q & A

# What is Enterprise Search?

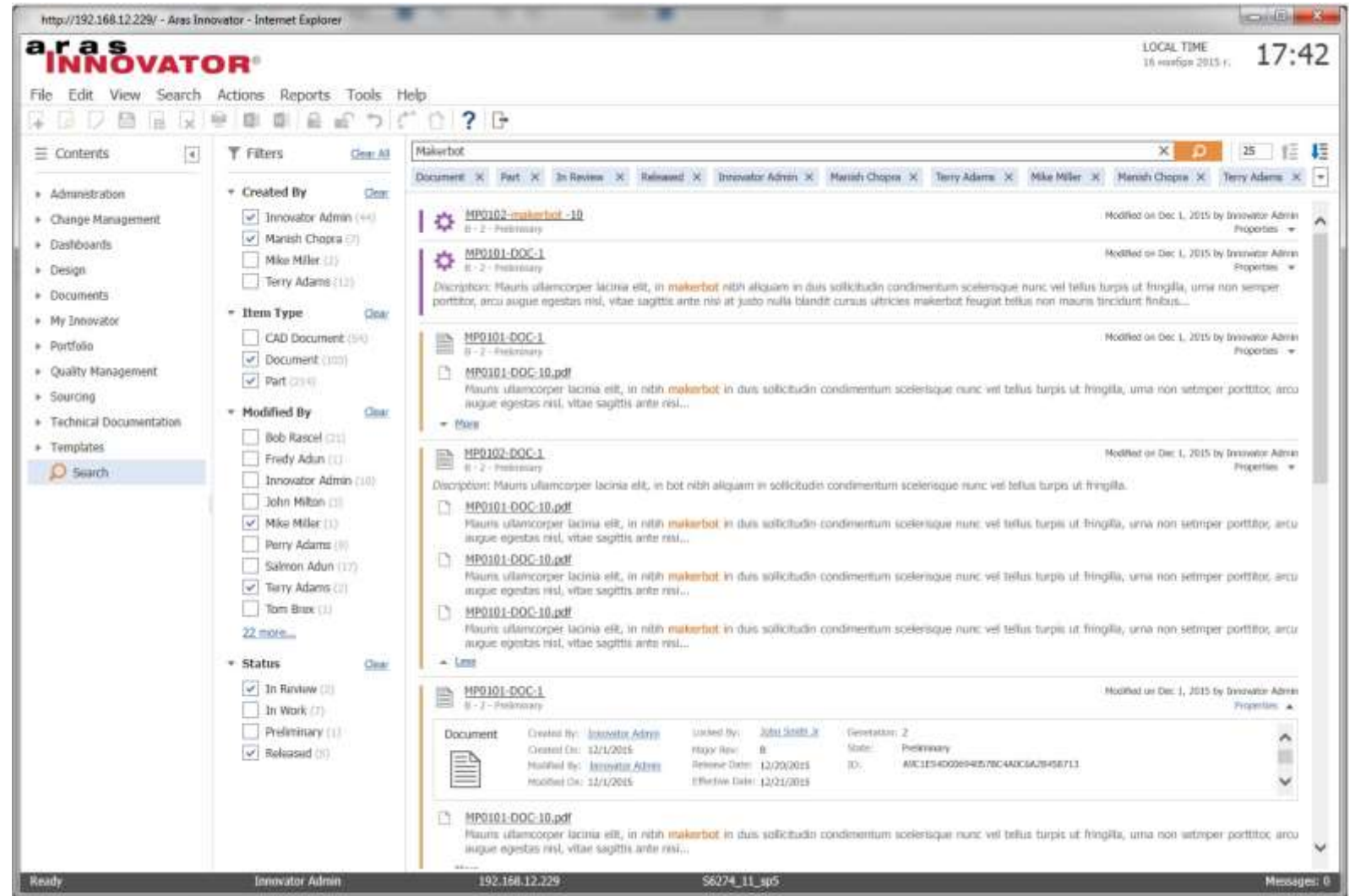
- Full Text Search
- In time, a replacement for Discover Innovator and Alcove 9
- Core functionality
- Uses Lucene / Solr
- Free for Subscribers
- Coming in 11.0 SP7, May 2016



# What is Enterprise Search?



- Search Across:
  - Multiple Item Types
  - Related Items
  - Content in Files
- Filter Results
- Permissions
- Configurable
- NOT:
  - Query builder
  - Report writer



# Demonstration

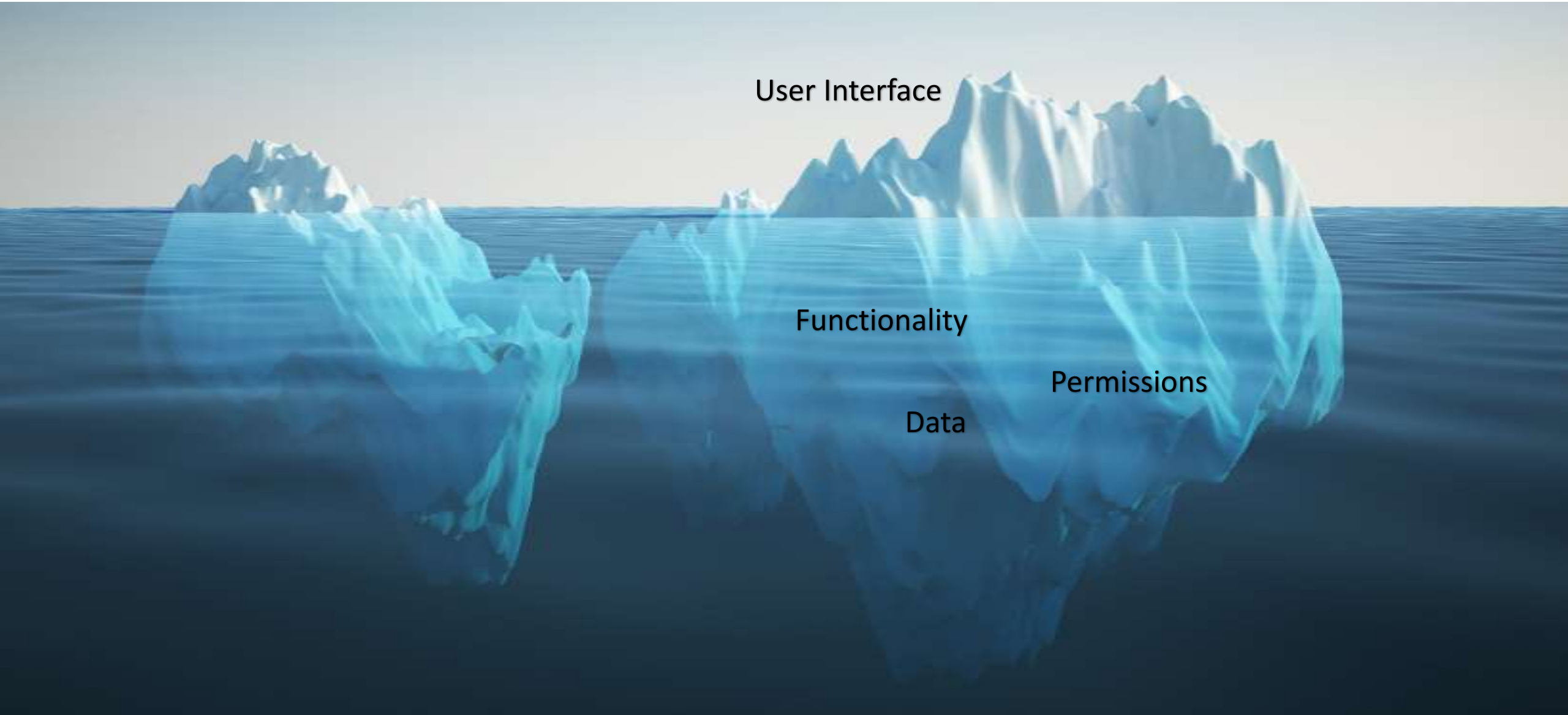


The screenshot displays the Aras Innovator web application interface. The browser address bar shows the URL: `http://192.168.12.229/ - Aras Innovator - Internet Explorer`. The application header includes the Aras Innovator logo, a menu bar (File, Edit, View, Search, Actions, Reports, Tools, Help), and a toolbar. The top right corner shows the local time as 17:42 on 16 Dec 2015.

The interface is divided into several sections:

- Contents:** A sidebar menu with categories like Administration, Change Management, Dashboards, Design, Documents, My Innovator, Portfolio, Quality Management, Sourcing, Technical Documentation, and Templates. A search icon is visible at the bottom of this menu.
- Filters:** A section for filtering documents, including:
  - Created By:** A list of users with checkboxes, including Innovator Admin (44), Manish Chopra (7), Mike Miller (1), and Terry Adams (12).
  - Item Type:** A list of document types with checkboxes, including CAD Document (54), Document (103), and Part (234).
  - Modified By:** A list of users with checkboxes, including Bob Rascel (2), Fredy Adun (1), Innovator Admin (10), John Milton (3), Mike Miller (1), Perry Adams (0), Salomon Adun (17), Terry Adams (2), and Tom Brax (1).
  - Status:** A list of document states with checkboxes, including In Review (2), In Work (7), Preliminary (1), and Released (2).
- Document List:** A table of documents with columns for document name, version, and modification date. The list includes:
  - MP0102-makerbot-10 (8-2 - Preliminary) Modified on Dec 1, 2015 by Innovator Admin
  - MP0101-DOC-1 (8-2 - Preliminary) Modified on Dec 1, 2015 by Innovator Admin
  - MP0101-DOC-1 (8-2 - Preliminary) Modified on Dec 1, 2015 by Innovator Admin
  - MP0101-DOC-10.pdf (8-2 - Preliminary) Modified on Dec 1, 2015 by Innovator Admin
  - MP0102-DOC-1 (8-2 - Preliminary) Modified on Dec 1, 2015 by Innovator Admin
  - MP0101-DOC-10.pdf (8-2 - Preliminary) Modified on Dec 1, 2015 by Innovator Admin
  - MP0101-DOC-10.pdf (8-2 - Preliminary) Modified on Dec 1, 2015 by Innovator Admin
  - MP0101-DOC-10.pdf (8-2 - Preliminary) Modified on Dec 1, 2015 by Innovator Admin
  - MP0101-DOC-1 (8-2 - Preliminary) Modified on Dec 1, 2015 by Innovator Admin
- Document Details:** A detailed view of a selected document (MP0101-DOC-1) showing:
  - Description:** Mauns ullamcorper lacinia est, in makerbot nith aliquam in dnis sollicitudin condimentum scelerisque nunc vel tellus turpis ut fringilla, urna non semper porttitor, arcu augue egestas nisl, vitae sagittis ante nisl...
  - Metadata:** Created by: Innovator Admin, Created On: 12/1/2015, Modified by: Innovator Admin, Modified On: 12/1/2015, Checked by: John Smith, Copy Rev: 8, Release Date: 12/09/2015, Effective Date: 12/01/2015, Generation: 2, State: Preliminary, ID: A6C3E4D006948578C4A0C5A7945E713

# The thing about search...



User Interface

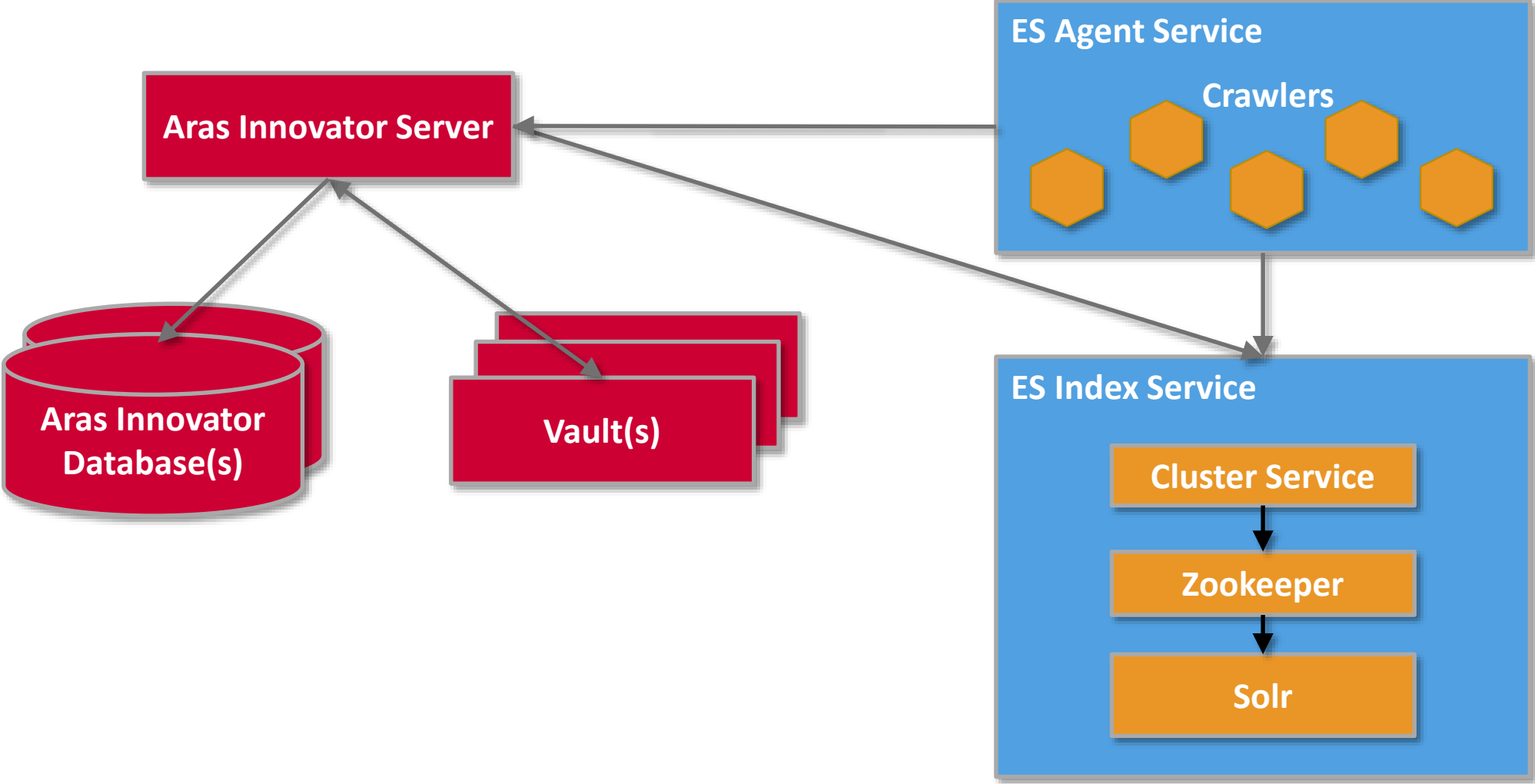
Functionality

Permissions

Data

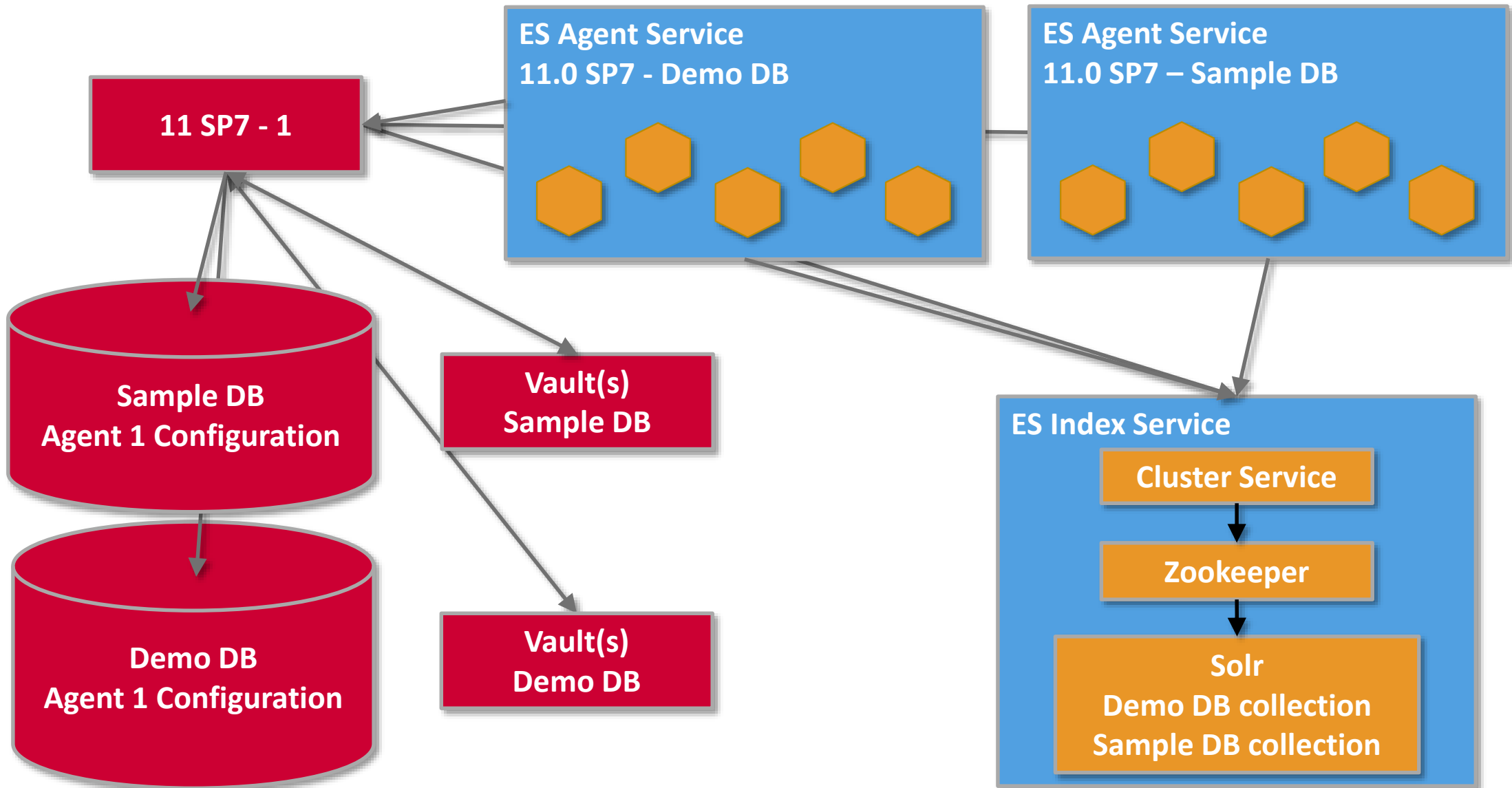


# Architecture





# Example

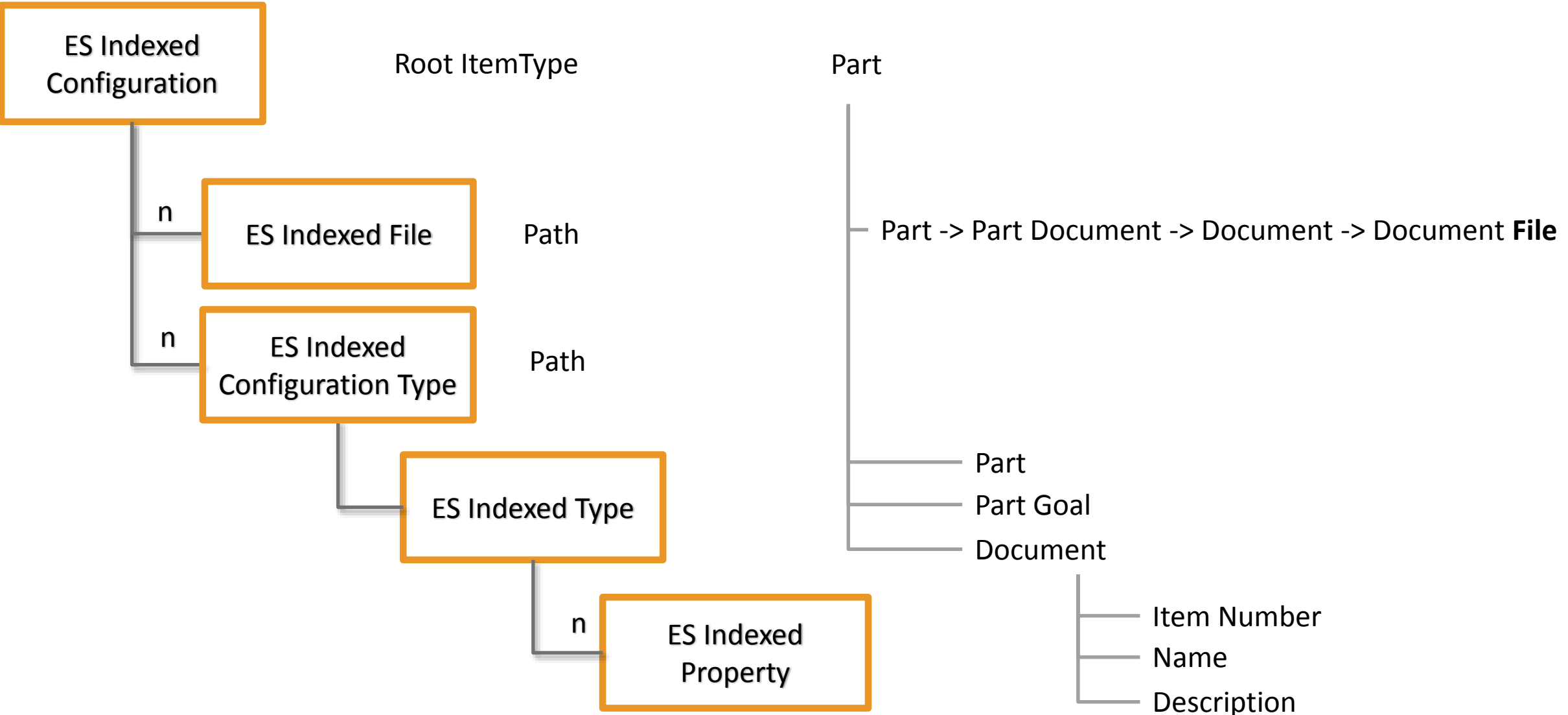


# Installation



- Install JRE 1.8
- ArasESIndexSetup.msi
  - Installs Solr, Zookeeper and Cluster Service
  - Run install in update mode for each database to install a collection
- ArasESAgentSetup.msi
  - Installs Agent and Crawlers
  - Has to be run separately for each database with Enterprise Search
  - Creates Agent configuration in database if it doesn't exist
- Default Ports for ES Index Service
  - Solr - 8983
  - Cluster Service - 8081
  - Zookeeper 2181
  - Change ports if installing multiple Index Services on the same machine

# Configuring Indexed ItemTypes



# Summary

- Full Text Search
- Free to Subscribers
- New components to Install
- Scalable architecture
- Coming in 11.0 SP7

**INNOVATION**  
**WITHOUT LIMITATION**